

COMPANY PROFILE

FOR QUALITY ✦ FOR INDUSTRY



"Well recognised in
construction product
& personnel
certification"

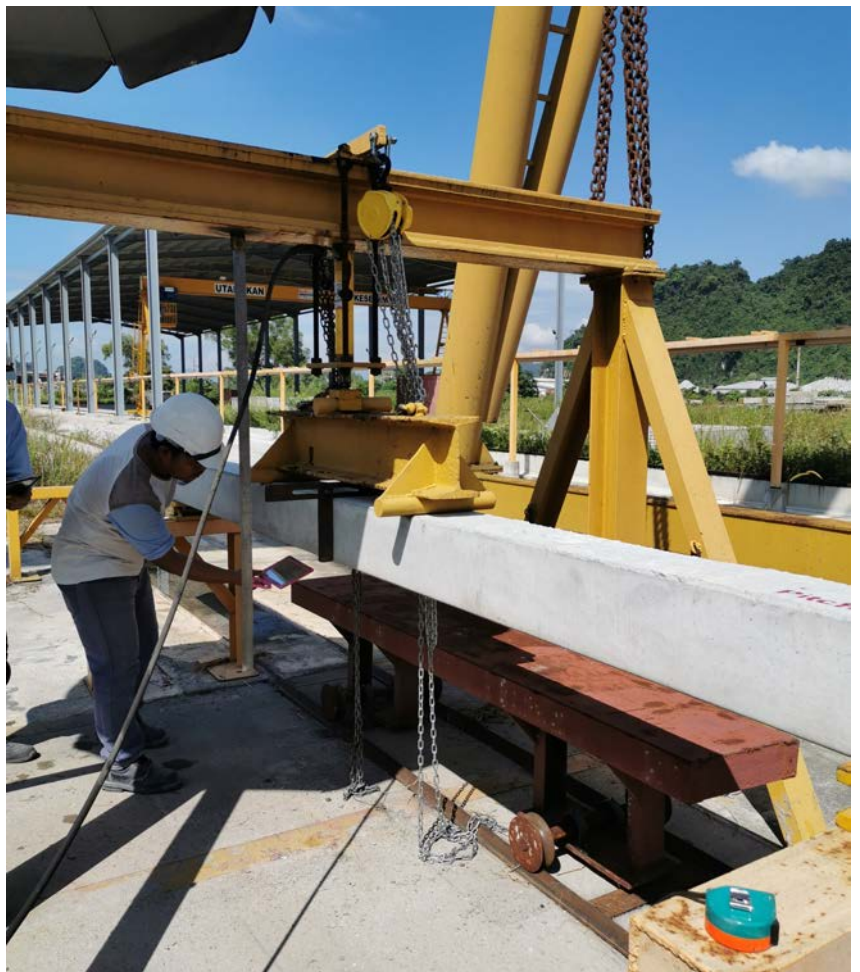




TABLE OF CONTENTS

1. ABOUT COMPANY
2. VISION / MISSION
3. BOARD OF DIRECTOR
4. OUR SERVICE
5. LIST OF MATERIAL TEST
6. CONTACT

IKRAM QA SUPPORT CLIENT'S ECONOMIC GROWTH AND SUSTAINABILITY BY PROVIDING COMPREHENSIVE SOLUTIONS THROUGH PRODUCT CERTIFICATION, INSPECTION AND MATERIAL TESTING RESPECTIVELY FOR INDUSTRY OF CONSTRUCTIONS AND BUILDING MATERIALS.





Let's Get Started

ABOUT COMPANY

IKRAM QA SERVICES SDN BHD (IKRAM QA) IS AN INDEPENDENT CERTIFICATION BODY FOR PRODUCT CERTIFICATION SCHEME TYPE 5 BASED ON THE STANDARD ISO/IEC 17067 THAT BEING ACCREDITED BY DEPARTMENT OF STANDARDS MALAYSIA (STANDARDS MALAYSIA) SINCE 2009 WITH ACCREDITATION NO ACB PC 03 COMPLIANCE TO ISO/IEC 17065.

THE PRODUCT CERTIFICATION SCHEMED OFFERED IS RECOGNISED BY MINISTRY OF FINANCE MALAYSIA(MOF), CONSTRUCTION INDUSTRY DEVELOPMENT BOARD MALAYSIA (CIDB), NATIONAL WATER SERVICES COMMISSION (SPAN), MALAYSIAN PUBLIC WORKS DE(JKR) AND OTHER LOCAL REGULATORY BODIES.



VISION

To be internationally recognized and locally preferred testing, inspection and certification body.



MISSION

To excel in our core business of testing and certification, we need: To recruit and retain the best talent. To develop the skill and optimized the human resource. To develop, maintain and continuously improve operational and delivery procedures. To continuously upgrade and maintain the facilities capable of meeting the requirements in line with the corporate vision. To be a successful and preferred testing and certification body, we need: To continuously improve our capabilities and processes. To understand fully our customers' and suppliers' needs. To be productive, creative and innovative.



OUR DIRECTORS



MOHAMAD AKHIR ABDULLAH



MOHD KAMSATUL AIDI
MOHD NOR

IKRAM QA SUPPORT CLIENT'S ECONOMIC GROWTH AND SUSTAINABILITY BY PROVIDING COMPREHENSIVE SOLUTIONS THROUGH PRODUCT CERTIFICATION, INSPECTION AND MATERIAL TESTING RESPECTIVELY FOR INDUSTRY OF CONSTRUCTIONS AND BUILDING MATERIALS.



MEET OUR TEAM



(MUHD SHAFIQ JALIL)

Head Of Department
EVALUATION DEPT



(MOHD HAFIZY MAT ZAIN)

Head Of Department
INSPECTION DEPT



(MAJIR HAMDAN ANUAR)

Head Of Department
CERTIFICATION DEPT



(NIK MOHD NASARUDDIN NIK HASAN)

Head Of Department
MATERIAL TESTING & LABORATORY DEPT

OUR SERVICES

PRODUCT CERTIFICATION

IKRAM QA is a leading independent Certification Body that operates a Product Certification Scheme for both local and imported products.

Our Product Certification Scheme, whether Type 5 or System 9, provides trustworthy service at very competitive cost in assuring quality and reliability of products certified. The Product Certification Scheme is offered to manufacturers, suppliers, Original Equipment Manufacturer (OEM) or Agent who need to have their product certified to meet the requirements of a national or international standard and also regulatory standard e.g. SPAN or CIDB standard.



LABORATORY MATERIAL TESTING

IKRAM QA Material Testing Laboratory was accredited under the SAMM accreditation Scheme with SAMM 347. located at

Block 7, Unipark Suria, Jalan Ikram - Uniten, 43000 Kajang, Selangor.

We are providing testing services of any products and materials used in building and construction to the public and private sectors. Our laboratory is very keen in adding the new scopes of accreditation along development of new Malaysian Standard have been publishing every year to compete and provide world class services.

INSPECTION SERVICE

IKRAM QA also provides inspection services as independent third party inspection, verification and endorsement services according to ISO/IEC 17020.

These services support the industry in demonstrating compliance with regulatory requirements, codes, standards and specifications as well as for in service inspections. Driven by a multi-disciplined team of highly skilled and experienced inspectors, we provide inspection services for new or innovation based product including components, plant as well as manufacturing facilities.

Figure 1
"Well recognised in construction product & personnel certification"

OUR SERVICES

SAMPLING & CONSIGNMENT

IIKRAM QA is recognized by CIDB, Malaysia for providing consignment sampling and testing to the prospective importer

Consignment sampling and testing is batch approval certification which are provided in line with the requirement of the CIDB Procedures for Importing Construction Products. Our service covers all point of entry in Malaysia such as KLIA and Port Klang.



READY-MIX CONCRETE CERTIFICATION

IIKRAM QA scheme's which under product certification Scheme Type 5 covers testing of the products and audit of the production

control system involved. This certification scheme is to ensure all fresh concrete produced by certified producer complied to CIS 21: 2018. RMC Certification is offered to RMC supplier that requires to be certified based on the CIDB, Malaysia's Schedule IV.

GOVERNMENT PRODUCT LISTING

IIKRAM QA provides listing of local construction product for used in government projects and the list was published annually since the first

edition in 1996, in compliance with Treasury Circular No. 7, 2002, issued by the Ministry of Finance (MOF). Beginning in 2014, this list remains in line with the current regulations issued by Government which the use of local materials/products are made compulsory as set out in the 1Pekeliling Perbendaharaan (1PP), Ministry of Finance, PK1/2013 Clause 6 (i) which has been effective from July 3, 2014.

Figure 1
"Well recognised in construction product & personnel certification"

LIST OF MATERIAL TEST

AGGREGATE, SAND, CRUSHER RUN

1. DETERMINATION OF ELONGATION INDEX
2. DETERMINATION OF PARTICLES SENSITIES (SPECIFIC GRAVITY)
3. DETERMINATION OF PARTICLES WATER ABSORPTION
4. SOUNDNESS TEST OF AGGREGATES (SODIUM SULFATE & MAGNESIUM SULFATE) - 5 CYCLES
5. MOISTURE CONTENT OF AGGREGATES (OVEN DRYING METHOD)
6. DETERMINATION OF CLAY, SILT AND DUST
7. TEN PERCENT FINES
8. DETERMINATION OF CRUSHING VALUE
9. DETERMINATION OF FLAKINESS INDEX (MS 30)
10. AGGREGATES IMPACT VALUE
11. DETERMINATION OF PARTICLE SIZE DISTRIBUTION-SIEVING METHODS (SIEVE ANALYSIS)
12. DETERMINATION OF RESISTANCE TO FRAGMENTATION (SIMILAR WITH-LOS ANGELES TEST)
13. LOS ANGELES TEST
14. DETERMINATION OF THE POLISHED STONE VALUE
15. DETERMINATION OF LOOSE BULK DENSITY AND VOIDS
16. ASSESSMENT OF FINE-METHYLENE BLUE TEST
17. DETERMINATION OF PARTICLE SHAPE- SHAPE INDEX
18. ASSESSMENT OF FINES-SAND EQUIVALENT TEST
19. DETERMINATION OF THE WATER CONTENT BY DRYING IN A VENTILATED OVEN
20. SOLUBLE CHLORIDE SALTS (CHLORIDE CONTENT)
21. ALKALI SILICA REACTIVITY
22. SULPHATE CONTENT
23. PH VALUE
24. DETERMINATION FRACTURE FACE VALUE
25. FINE AGGREGATE ANGULARITY & BULK SPECIFIC GRAVITY
26. ORGANIC CONTENT
27. CLAY LUMP



HARDENED CONCRETE

1. DENSITY BASED ON WEIGHT DETERMINATION OF SPECIMEN IN AIR
2. COMPRESSIVE STRENGTH OF CONCRETE CUBES
3. COMPRESSIVE STRENGTH OF CONCRETE CORE
4. DENSITY OF CONCRETE CORE
5. CHLORIDE CONTENT



LIST OF MATERIAL TEST

CLAY BRICK

1. DETERMINATION OF COMPRESSIVE STRENGTH
2. DETERMINATION OF WATER ABSORPTION
3. DETERMINATION OF COMPRESSIVE STRENGTH
4. DETERMINATION OF WATER (HD UNITS)

ROCK

1. UNCONFINED COMPRESSIVE STRENGTH
2. POINT LOAD



PRECAST CONCRETE MASONRY UNITS

1. END AND BEDDING SURFACES
2. EXTERNAL SHELL THICKNESS OF BLOCKS
3. DIMENSIONAL DEVIATIONS
4. STRENGTH OF BLOCK
5. STRENGTH OF BLOCK - TRANSVERSE STRENGTH (THICKNESS <75MM)
6. STRENGTH OF BRICKS



PRECAST REINFORCED CONCRETE BOX CULVERT

1. WATER ABSORPTION

CEMENT BRICK

1. DETERMINATION OF COMPRESSIVE STRENGTH
2. DETERMINATION OF WATER ABSORPTION
3. DIMENSION



PAVING BLOCK

1. SPACER NIBS & PROFILED SIDE FACES
2. VISUAL ASPECTS
3. SHAPE AND DIMENSION
4. TENSILE SPLITTING STRENGTH AND FAILURE LOAD
5. THICKNESS OF FACING LAYER
6. WEATHERING RESISTANCE
7. COMPRESSIVE STRENGTH



LIST OF MATERIAL TEST

COUPLE BAR TENSILE TEST

1. COUPLE BAR TENSILE TEST

CAST IRON- TENSILE & BEND TEST

1. TENSILE TEST & ELONGATION



CARBON STEEL BAR FOR THE REINFORCEMENT OF CONCRETE

1. DETERMINATION OF SIZES, CROSS SECTIONAL AREA AND MASS
2. TENSILE TESTING FOR METALIC, MATERIAL TO MEASURE TENSILE, STRENGTH, YIELD STRESS AND ELONGATION FOR THE FORCE RANGE (0-2000KN)
3. BEND TEST
4. BEND PERFORMANCE



STEEL FABRIC FOR THE REINFORCEMENT OF CONCRETE

1. STEEL FABRIC FOR THE REINFORCEMENT OF CONCRETE TENSILE, BEND, REBEND AND WELD SHEAR FORCE TEST
2. TENSILE PROPERTIES
3. SHEAR FORCE OF WELDED JOINTS
4. BEND PERFORMANCE



STEEL PLATE, ALUMINIUM, STEEL BEAM, HOLLOW STEEL

1. TENSILE TESTING FOR METALIC, MATERIAL TO MEASURE TENSILE, STRENGTH, YIELD STRESS AND ELONGATION FOR THE FORCE RANGE (0-2000KN)
2. BEND TEST
3. DIMENSION



LIST OF MATERIAL TEST

STEEL WIRE FOR THE REINFORCEMENT OF CONCRETE

1. TENSILE
2. BEND PERFORMANCE
3. DIMENSION

METAL DECK

1. THICKNESS OF METAL WITH COATING AND WITHOUT COATING



C CHANNEL AND BATTERY

1. TENSILE TESTING FOR METALIC, MATERIAL TO MEASURE TENSILE, STRENGTH, YIELD STRESS AND ELONGATION FOR THE FORCE RANGE (0-2000KN)
2. MASS PER UNIT AREA (GRAVIMETRIC METHODS) AND THICKNESS OF COATING BY CALCULATION
3. THICKNESS OF METAL WITH COATING AND WITHOUT COATING



PREFABRICATED SEPTIC TANK

1. TENSIL TESTING & ELONGATION
2. FLEXURAL STRENGTH & MODULUS OF ELASTICITY
3. WATER ABSORPTION
4. GLASS FIBRE CONTENT

PE TANK FOR SEWERAGE

- TENSIL TESTING & ELONGATION



CERAMIC TILES

1. SURFACE QUALITY
2. DIMENSION
3. WATER ABSORPTION (VACUUM & BOIL METHOD)
4. BREAKING STRENGTH & MODULUS OF RUPTURE
5. RESISTANCE TO DEEP ABRASION-UNGLAZED TILES
6. RESISTANCE TO SURFACE ABRASION-GLAZED TILES
7. RESISTANCE TO CRAZING - GLAZED TILE
8. RESISTANCE TO STAINING- GLAZED & UNGLAZED TILES
9. CHEMICAL RESISTANCE



LIST OF MATERIAL TEST

QUALITY OF VITREOUS CHINA SANITARY APPLIANCES (BROKEN PIECES VITREOUS CHINA OR FIRE CLAY, URINAL, BIDET, CISTERN AND COVER

1. QUALITY OF GLAZING
2. TOLERANCES
3. VISUAL EXAMINATION
4. WATER ABSORPTION TEST
5. CRAZING TEST
6. CHEMICAL RESISTANCE TEST
7. RESISTANCE TO STAINING TEST
8. WARPAGE



CERAMIC FLUSHING CISTERN

- WORKMANSHIP
- SHELL
- COVER
- WATER LINE
- OVERFLOW
- AIR SEPARATION DISTANCE
- MARKING
- FLUSH PIPE
- CERAMIC WARE CISTERN-VITREOUS CHINA QUALITY
- CERAMIC WARE CISTERN-FRONT THRUST TEST
- VOLUME OF DISCHARGE
- RATE OF DISCHARGE
- WATER INLET VALVE
- FLUSHING DEVICE
- CHEMICAL ENDURANCE FOR INLET VALVE AND FLUSHING MECHANISM
- BACKFLOW PREVENTION

CERAMIC WASH BASIN

1. QUALITY
2. DIMENSION
3. STRENGTH AND SUPPORT TEST
4. DRAINING OF WATER
5. MARKING



VITREOUS CHINA URINAL - SPECIFICATION

1. FLUSHING TEST FOR SLAB URINALS (PEDESTAL URINAL)
2. FLUSHING TEST FOR WALL HUNG URINALS
3. STRENGTH TEST FOR WALL HUNG URINALS
4. MATERIAL
5. THICKNESS
6. SURFACE FINISH
7. MARKING



LIST OF MATERIAL TEST

PE TANK FOR COLD WATER STORAGE

- PHYSICAL ENDURANCE
- CHEMICAL ENDURANCE
- BACK SIPHON AGE
- VALVE MECHANISM
- INLET CONNECTION
- WORKMANSHIP
- MARKING
- TENSIL TESTING



PLASTIC FLUSHING CISTERN

- WORKMANSHIP
- APPEARANCE
- OPACITY
- SHELL THICKNESS
- SHELL THICKNESS
- SUPPORT DEVICE
- COVER
- WATERLINE
- OVERFLOW
- AIR SEPARATION DISTANCE
- MARKIG
- FLUCH PIPE
- COLOUR FASTNESS TO LIGHT
- DISTORTION RESISTANCE
- FRONT TRUST TEST
- IMPACT TEST
- VOLUME OF DISCHARGE
- RATE OF DISCHARGE
- WATER INLET VALVE
- FLUSHING DEVICE
- CHEMICAL ENDURANCE FOR INLET VALVE AND FLUSHING MECHANISM
- BACKFLOW PREVENTION



WC FLUSHING CISTERN -FLUSHING DEVICE

1. GENERAL
2. WATERTIGHT JOINT
3. VALVE MECHANISM
4. WORKMANSHIP
5. MARKING
6. DISCHARGE VOLUME
7. RATE OF DISCHARGE
8. PHYSICAL ENDURANCE
9. CHEMICAL ENDURANCE



LIST OF MATERIAL TEST

SANIRATY TAPWARE

1. MARKING
2. DIMENSIONAL CHARACTERISTICS
3. LEAK TIGHTNESS CHARACTERISTICS
4. PRESSURE RESISTANCE CHARACTERISTICS
5. TORSION TEST
6. MECHANICAL ENDURANCE CHARACTERISTIC OF THE OPERATING MECHANISM



FLUSH VALVE – SPECIFICATION

1. DIMENSION FOR INLET AND OUTLET
2. VACUUM BREAKER
3. DESIGN
4. TEST REQUIREMENT ON WC FLUSH VALVE
 - ENDURANCE TEST
 - LEAK TIGHTNESS
 - PRESSURE RESISTANCE
 - EFFECTIVENESS VACUUM BREAKER (OPTIONAL)
 - VOLUME OF DISCHARGE
 - RATE OF DISCHARGE
5. TEST REQUIREMENT ON URINAL FLUSH VALVE
 - ENDURANCE TEST
 - LEAK TIGHTNESS
 - PRESSURE RESISTANCE
 - EFFECTIVENESS VACUUM BREAKER (OPTIONAL)
 - VOLUME OF DISCHARGE
 - RATE OF DISCHARGE
6. CLASSIFICATION
7. WORKMANSHIP
8. MARKING



shutterstock.com · 1307819236



PE TANK FOR SEWERAGE

WATER CLOSET (WC)

1. WATER CONSUMPTION TEST (FLUSHING TEST)

TERRAZZO FLOOR TILES

- DIMENSION
- WATER ABSORPTION (SEQUENCE NO 1)
- TRANSVERSE STRENGTH (SEQUENCE NO 2)



LET'S CONNECT WITH US!



IKRAM QA SERVICES SDN BHD
(199901004665) Block 5, Level 1, Unipark
Suria, Jalan Ikram-Uniten,
43000 Kajang, Selangor, Malaysia

Email: ikramqa@ikram.com.my
(603) 8738 3204
www.ikramqa.com.my

